



UNIVERSAL PREDATOR FRONT BAR ROUND HOOP (3" WIDE)

IMPORTANT! – READ BEFORE INSTALLATION

- This product must be installed exactly as per these instructions using only hardware supplied.
- Take a few moments to read instructions thoroughly before beginning work.
- In the event of damage to any bar component please contact OFFROAD ANIMAL to arrange repair/replacement of components.
- The installation of this product is recommended for trained personnel.
- These instructions are correct at time of publication. OFFROAD ANIMAL cannot be held responsible for the impact of any changes subsequently made by the vehicle manufacturer. If you find something has changed, please contact us to let us know!
- During installation it is the duty of the installer to check correct operation/clearances of all components.
- If Instructions are to be printed for reference in the workshop, it is recommended that they are printed in colour, for best legibility.
- **Approx. Install Time 15 minutes**

GENERAL CARE AND MAINTENANCE

Use caution when cleaning with pressure washers, as they may compromise the product coating's integrity. Exercise care to avoid surface damage.

Only wash the product with a PH neutral car wash to prevent paint damage and discolouration.

Do not use acidic or alkaline based cleaning products.

Plastic parts may be maintained with silicone spray.

It is important to perform regular checks (pre/during/post trip or on an annual basis) on the installed product. More frequent checks may be required in extreme use cases. Checks include:

- Visual inspection for damage (eg. cracks, chips, dents etc.)
- Electrical wiring is not rubbing anything or worn out
- Bolts are torqued to correct specification (see torque guide below)

For touching up small stone chips, Offroad Animal recommends the following paint products:

- Dupli-Color Trim & Bumper Paint Black (TB101)
- VHT Hood, Bumper & Trim Paint Black (SP27)

BOLT TORQUE SETTINGS

Use the following bolt torques on all general fasteners, unless otherwise specified.

GENERAL FASTENERS	
Size	Torque Nm
M5	5 Nm
M6	9 Nm
M8	22 Nm
M10	44 Nm
M12	77 Nm

Use the following bolt torques on all structural front bar mount and tow point fasteners, and rear towbar fasteners, unless otherwise specified.

FRONT BAR MOUNTS AND TOW POINTS + REAR TOWBAR	
Size	Torque Nm
M10	57 Nm
M12	100 Nm
M14	164 Nm
M16	248 Nm

Always use a torque wrench to set correct torque settings. Ensure torque wrench is set to Nm unit of measurement. Otherwise perform conversion to lb-ft.


TOOLS REQUIRED

The following tools will be required to install the product.

Hand Tools	Power Tools	Workshop Equipment
Hex (Allen) Key 6mm Metric Socket/Spanner 13mm Metric Socket/Spanner 16mm Metric Socket/Spanner 17mm	N/A	N/A

WORKSHOP SAFETY

It is the responsibility of the installer to always complete works in a safe manner. Make sure the following safety equipment is available and precautions are observed whilst fitting this product.

<p>Hearing Protection</p> 	<p>Always wear ear protection when using power tools.</p>
<p>Eye Protection</p> 	<p>Ensure eye protection is always worn when cutting or drilling.</p>
<p>Manual Handling</p> 	<p>Do not attempt to lift bar assemblies or rock sliders on your own.</p> <p>Always use two people to lift or use mechanical Lifting aid such as hydraulic lifting trolley.</p>
<p>Vehicle Support</p> 	<p>Always ensure vehicle is properly supported when working on it. Do not attempt to fit products whilst suspension work is being carried out. Do not work under a vehicle supported only by a jack.</p>



1. This round hoop can support a 22" single row light bar bolted to the underside.

There are two options for mounting. Bolting directly to the hoop, or using extension brackets (required for some vehicles otherwise light bar will hit the grille behind).

2. As of June 2026, the light bar can be bolted directly to the mounting tabs on the hoop for the following vehicles:
 - a. Chevrolet Silverado 2500 2024-on
 - b. Ford Ranger Super Duty 2026-on
 - c. RAM 1500 TRX 2021-2024
 - d. RAM 2500 2019-on

TOOLS REQUIRED

Refer to instructions supplied with light bar

FASTENERS

Supplied with light bar



3. If using extension brackets, bolt the supplied B-1832 brackets to the mounting tabs on the hoop and secure with M8x20 hex bolts, washers and flange nuts.
4. Then bolt the light bar to the extension brackets.
5. As of June 2026, the light bar needs to be fitted with extension brackets on the hoop for the following vehicles:
 - a. RAM 1500 DS 2017-2023
 - b. RAM 1500 DT Hemi V8 2021-2024
 - c. RAM 1500 DT Hurricane I6 2025-on
 - d. Toyota Tundra 2022-on

TOOLS REQUIRED

13mm socket/spanner

Refer to instructions supplied with light bar

FASTENERS

2x M8x20 hex bolt
 2x M8 washer
 2x M8 flange nut

Supplied with light bar



6. If installing UHF radio antenna, there are two spots provided on the round hoop, as shown.

TOOLS REQUIRED

Refer to instructions supplied with antenna

FASTENERS

Supplied with antenna

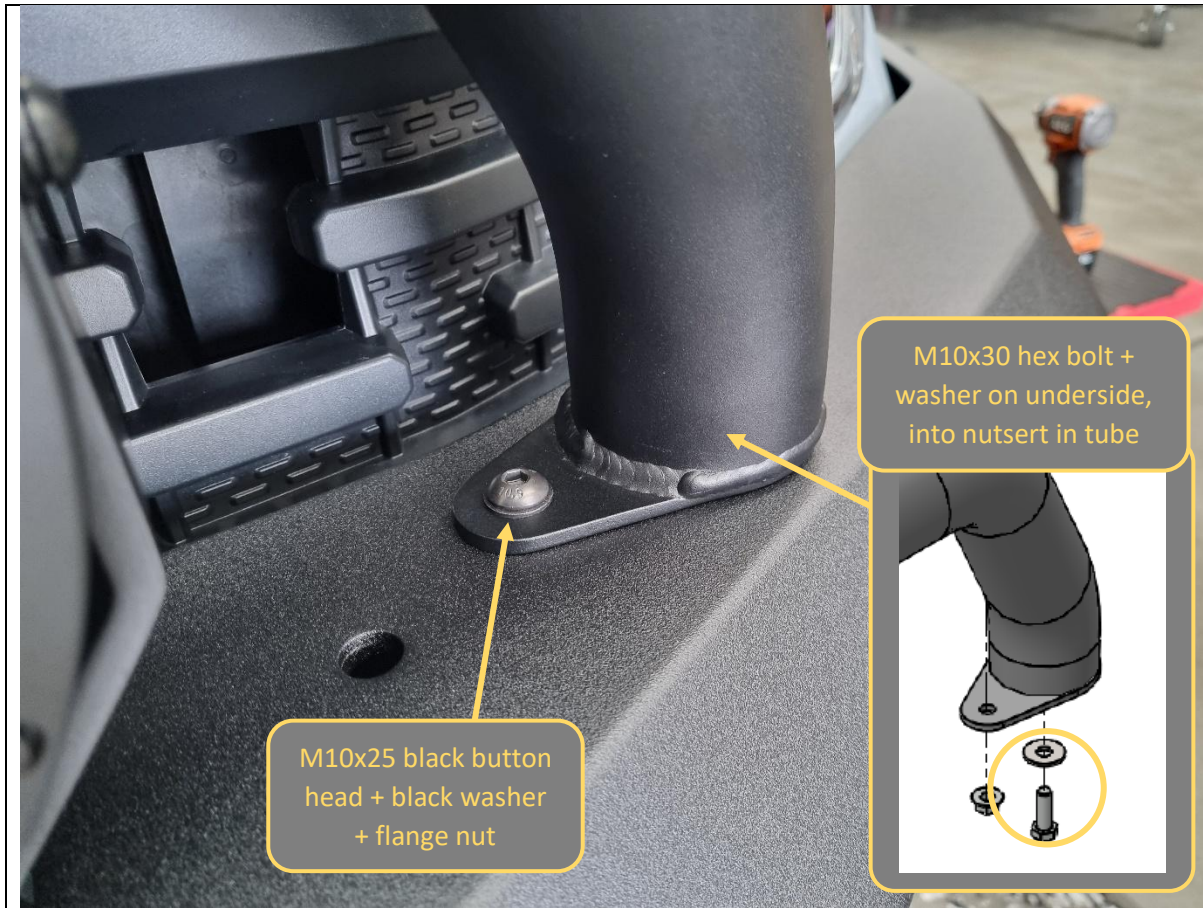


7. Fit the hoop onto the Predator bull bar. It is easiest done when the bull bar is off the vehicle, but should still be possible afterwards.
8. This round hoop can support driving lights bolted to the top face of the bull bar with a maximum height of 250mm. (Height capacity reduced if also bolting light bar to hoop).

Do not attempt to bolt driving lights to the underside of the Round Hoop. The mounting tabs are only there to support 22" light bars.

TOOLS REQUIRED

FASTENERS



9. The round hoop attaches to the bull bar with 2x bolts per side.
10. Fit 1x M10x30 hex bolt and washer from the underside of the bar into the nutsert on the end of the tube.
11. Fit 1x M10x25 black button head bolt and black washer on top of the flange tab and secure with a flange nut on the underside of the bar.

Note: Some older bull bars may not have this secondary hole. You will have to use the round hoop as a jig and mark the hole location, then drill out with an 11mm drill bit. Deburr, clean and paint the drilled holes to prevent rust.

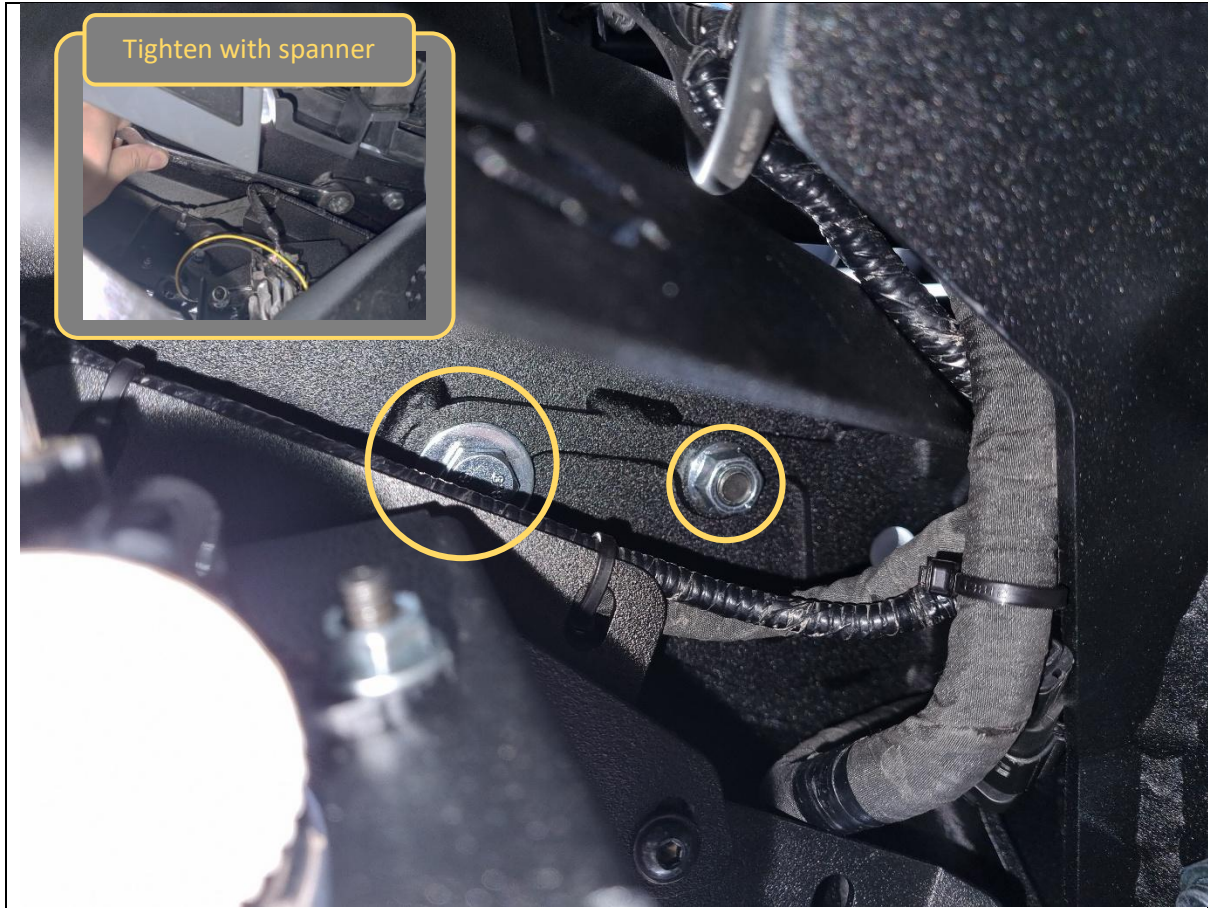
TOOLS REQUIRED

16/17mm socket/spanner
6mm hex/Allen key

FASTENERS

2x M10x30 hex bolt
2x M10 plain washer

2x M10x25 black button head
2x M10 black washer
2x M10 flange nut



12. Above image shows fastener and tool access from inside of Ranger Super Duty bull bar.

It is still recommended to install the hoop before the bull bar is fitted to the vehicle.

TOOLS REQUIRED

FASTENERS



- 13. On some vehicles, the round hoop will partially obstruct the indicator lamps at certain viewing angles. A repeater lamp must be installed in the bull bar to maintain ADR compliance.
- 14. As of June 2026, the only vehicle where this is required is the Ranger Super Duty. Refer to main bull bar instructions for indicator installation and wiring.

TOOLS REQUIRED

Refer to bull bar instruction

FASTENERS

Refer to bull bar instruction



Congratulations! You're done!